

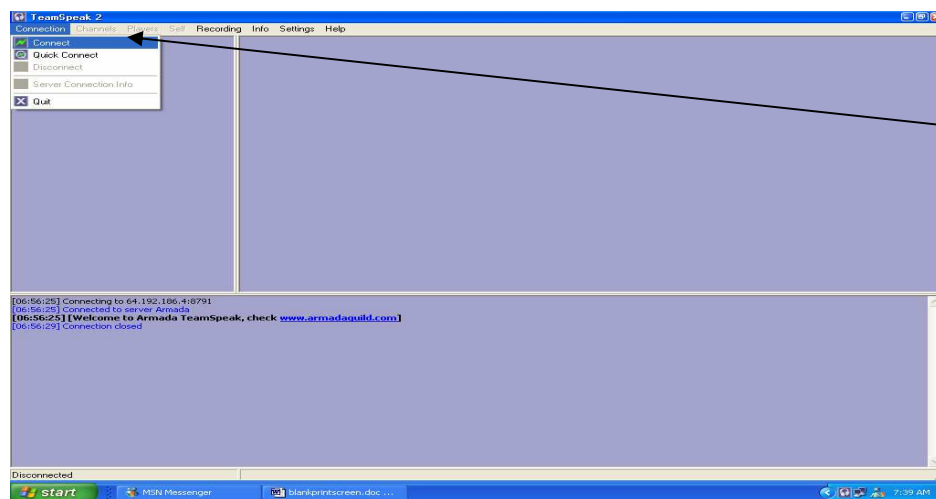
Setting up Teamspeak

Rules to Teamspeak: Please be aware that Armada is a family oriented guild and we request that language or topics of conversation on our server be respectful of the fact that we have members of both genders and multiple ages from adolescents to senior citizens who may also be in the channels. Please check out our website at www.armadaguild.com for our complete code of conduct concerning our guild and teamspeak.

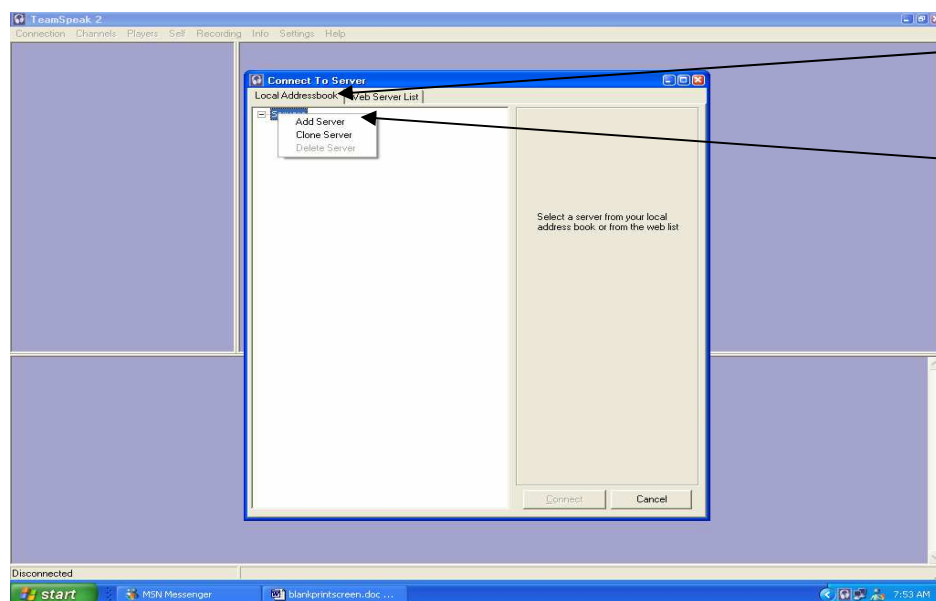
Needed Equipment: Speakers to listen in with (We have many who start this way as everyone has these already)
Microphone to talk if you wish
(We recommend a headset combo with microphone and they can be purchased almost anywhere for a reasonable price)

Needed Programming: You need to have the *TS2 win32 client version* of Teamspeak. It can be downloaded (**free**) from <http://www.goteamspeak.com/downloads.php>. This is a short program that can be downloaded and installed while in game play with no need to reboot your system.
(We suggest an installation to desktop so that there is an icon easily found to open the program whenever you wish to use it)

Once downloaded and installed open the program and follow the set up below.

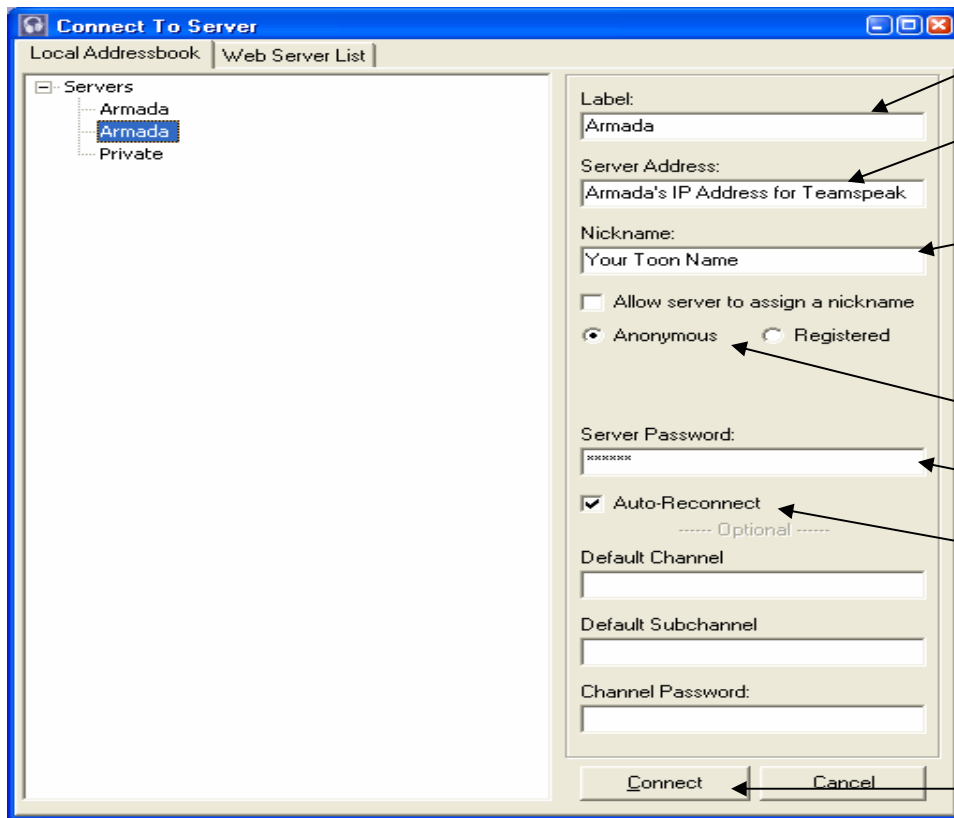


Click on Connection then click on Connect

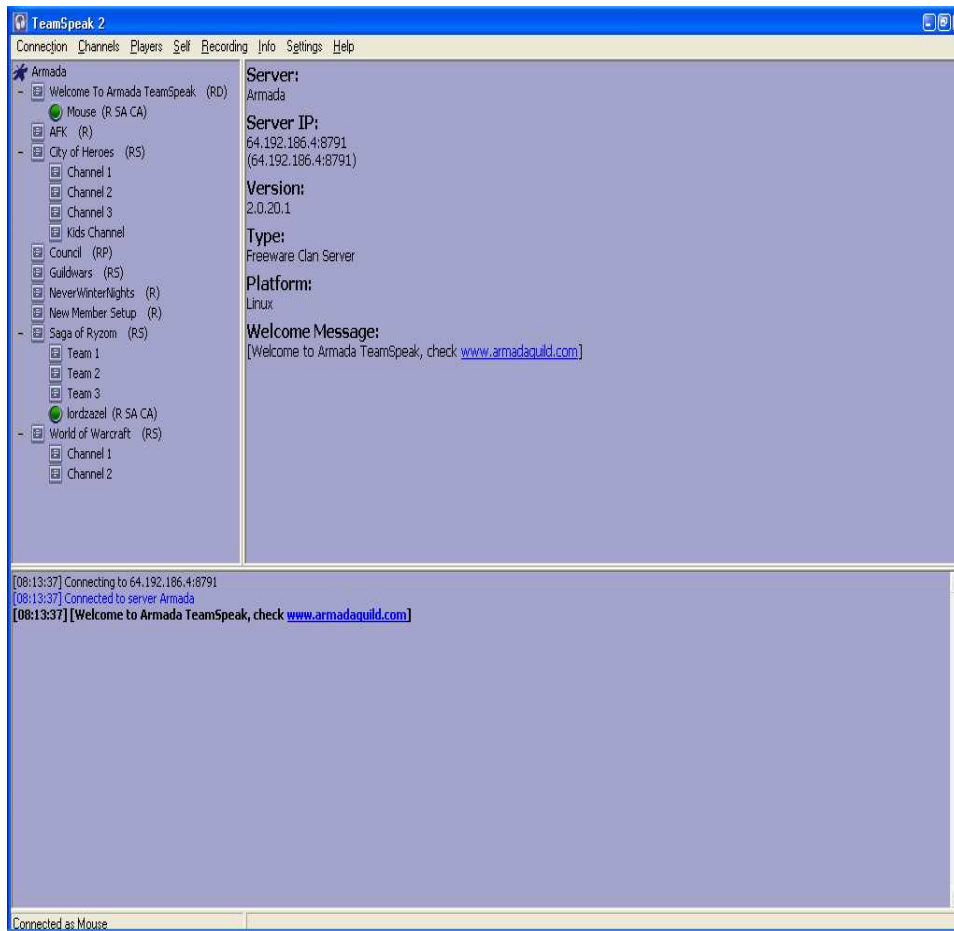


Make sure the Local Addressbook tab is selected.

You need to create a new server. Do this by right clicking on server and then clicking on add server. It will then add a box into your server list for you to name, we suggest you name this Armada and then enter.



- a. Label the server; again we suggest the label Armada.
- b. Insert the Armada teamspeak IP address you were given.
- c. Type in a name that the others will recognize you on teamspeak with. We suggest your most frequently played toon name.
- d. Click the anonymous area if it is not already done so.
- e. Insert the Server password you were given.
- f. Click the auto-reconnect area, should by chance teamspeak go down this will allow the program to reconnect you once its back up.
- g. Click on connect.



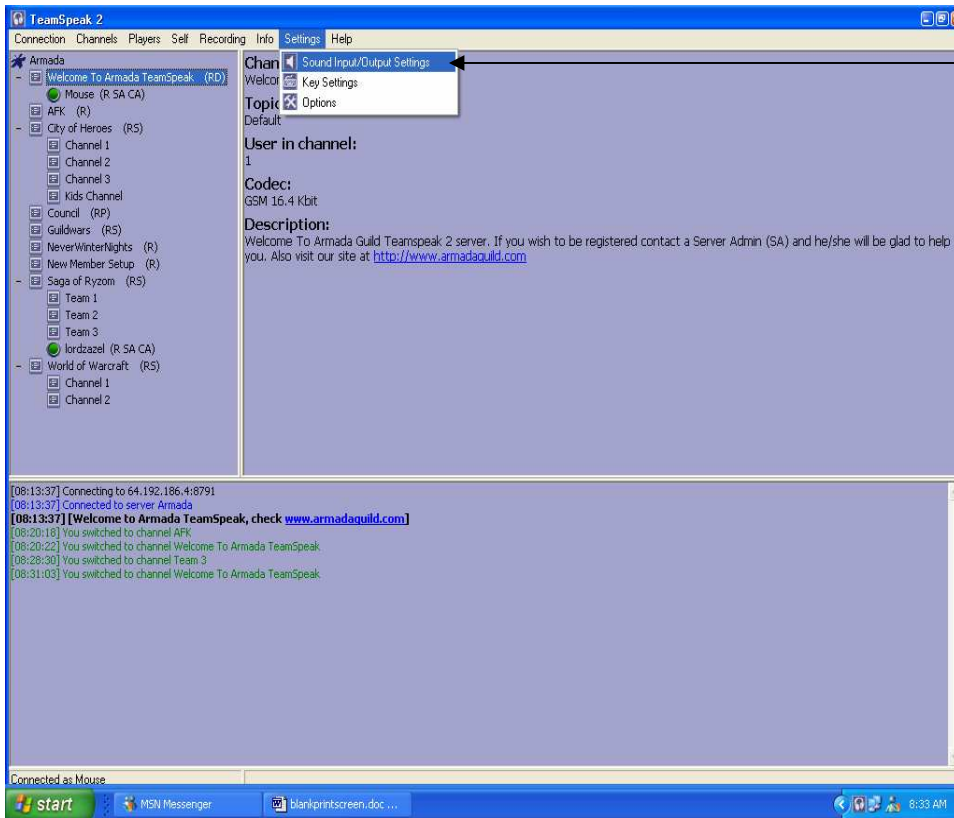
Congrats, you are now in the main channel.

We suggest you set your talk mode to require a push to talk rather than voice activation.

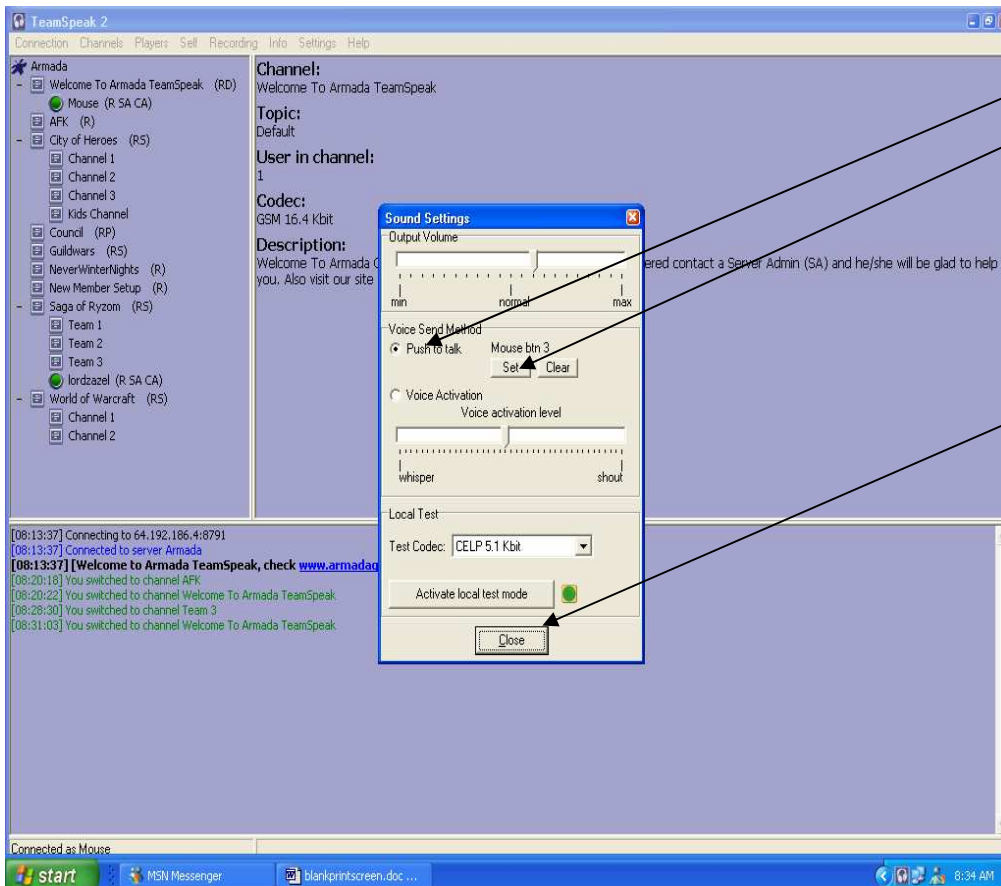
This decreases feedback that would occur by your microphone possibly picking up others voices and then activating, which causes echoes.

Please see the following steps to set your talk mode.

Note: You will only need to do this at set up and it will keep this setting for future login until you would reset it.



Click on settings and then sound Input/Output settings.

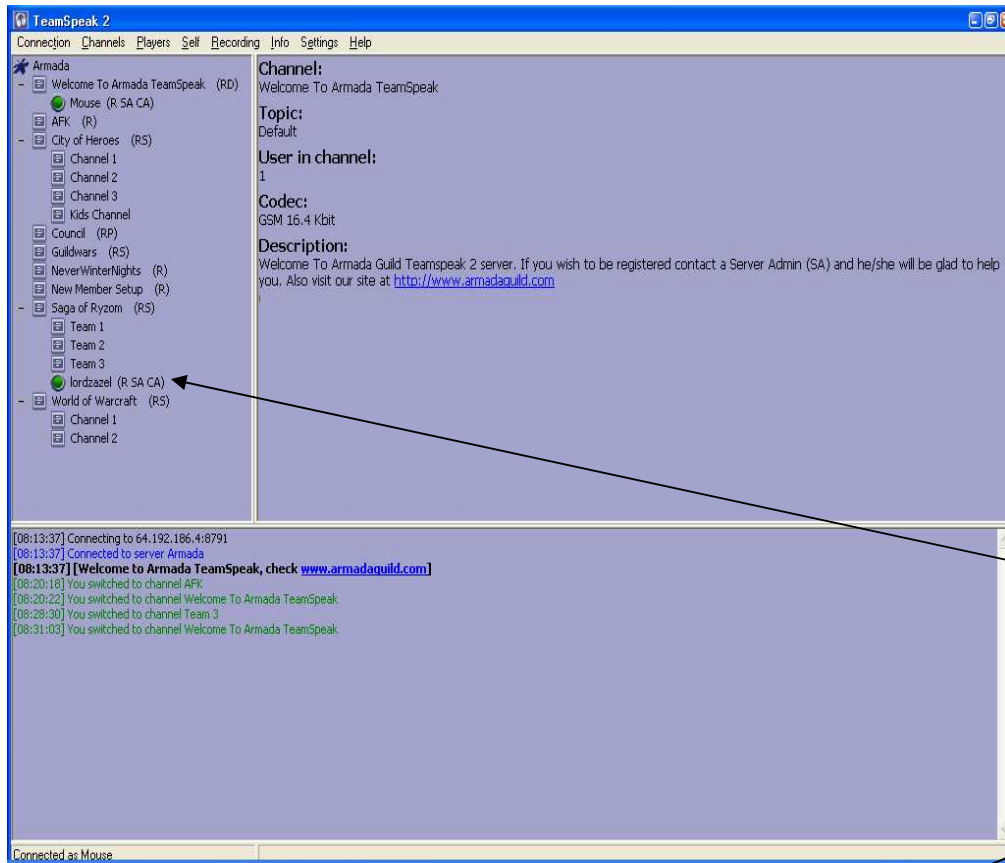


a. Click into the push to talk area and then the set button.

b. It will then ask you to select a key. This will be the button or key you will use when you wish to talk.

c. Then click on close

Helpful Hint: Do not use a button that that is the same as a game short key. Most of us use a mouse button or one possibly on the number pad of our keyboards.

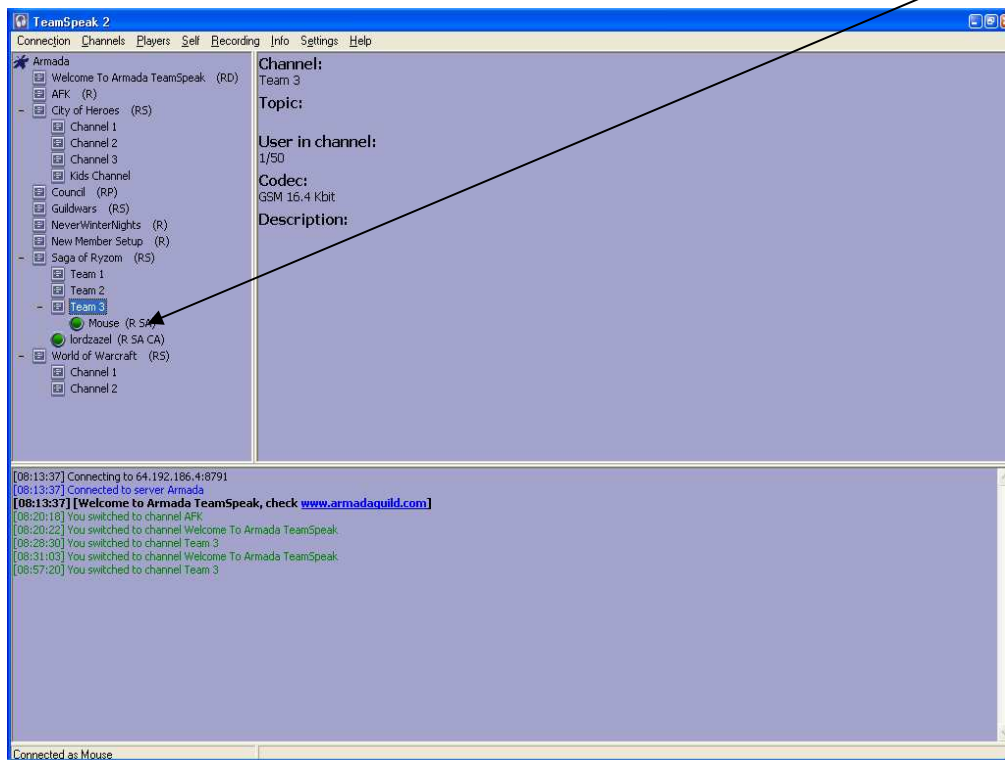


Now your ready to join your other game pals.

To go to whatever channel for the game you play just double click on that channel.

Caution: For those game channels that have sub channels it is a little misleading to see what channel people are actually in. If people are in the main channel for that game it appears as if they are in the last sub channel.

Sample: See “lorzazel” at the left within the “Saga of Ryzom” channels, it appears that he may be in the team 3 sub channel but he is actually in the main channel titled “Saga of Ryzom. See the following print screen sample of how it would look if someone were actually in sub channel team 3.



In the future when you come in you will always come into the main channel unless you set other settings to come into a different channel (You can change your default channel area in the same area of which you entered the IP address in the beginning).

Have fun!!!!